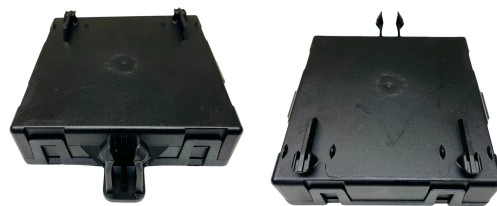


0 CENTRAL DOOR LOCKING MODULE A1669004202 MERCEDES
A2C7411660200 CONTINENTAL



Car brand	Mercedes
OEM Number	A 166 900 42 02
Manufacturer	Continental
Brand Number	A2-C741-1660-2-00
Available QTY	16

PRICE: €45.00

PRODUCT
DESCRIPTION

Right front door control unit.

2020	Mercedes-Benz	GLA250	4Matic, Base	2.0L L4 - Flex, 2.0L L4 - Gas
2019	Mercedes-Benz	CLA250	4Matic, Base	2.0L L4 - Gas
2019	Mercedes-Benz	CLA45 AMG	4Matic	2.0L L4 - Gas
2019	Mercedes-Benz	GLA250	4Matic, Base	2.0L L4 - Flex, 2.0L L4 - Gas
2019	Mercedes-Benz	GLA45 AMG	4Matic	2.0L L4 - Gas
2018	Mercedes-Benz	CLA250	4Matic, Base	2.0L L4 - Gas
2018	Mercedes-Benz	CLA45 AMG	4Matic	2.0L L4 - Gas
2018	Mercedes-Benz	GLA250	4Matic, Base	2.0L L4 - Flex, 2.0L L4 - Gas
2018	Mercedes-Benz	GLA45 AMG	4Matic	2.0L L4 - Gas
2017	Mercedes-Benz	B250e	Base	Electric
2017	Mercedes-Benz	CLA250	4Matic, Base	2.0L L4 - Gas
2017	Mercedes-Benz	CLA45 AMG	4Matic	2.0L L4 - Gas
2017	Mercedes-Benz	GLA250	4Matic, Base	2.0L L4 - Flex, 2.0L L4 - Gas
2017	Mercedes-Benz	GLA45 AMG	4Matic	2.0L L4 - Gas
2016	Mercedes-Benz	B250e	Base	Electric
2016	Mercedes-Benz	CLA250	4Matic, Base	2.0L L4 - Gas
2016	Mercedes-Benz	CLA45 AMG	4Matic	2.0L L4 - Gas
2016	Mercedes-Benz	GLA250	4Matic, Base	2.0L L4 - Flex, 2.0L L4 - Gas
2016	Mercedes-Benz	GLA45 AMG	4Matic	2.0L L4 - Gas
2015	Mercedes-Benz	B Electric Drive	Base	Electric
2015	Mercedes-Benz	CLA250	4Matic, Base	2.0L L4 - Gas
2015	Mercedes-Benz	CLA45 AMG	4Matic	2.0L L4 - Gas
2015	Mercedes-Benz	GLA250	4Matic, Base	2.0L L4 - Flex, 2.0L L4 - Gas
2015	Mercedes-Benz	GLA45 AMG	4Matic	2.0L L4 - Gas
2014	Mercedes-Benz	B Electric Drive	Base	Electric
2014	Mercedes-Benz	CLA250	4Matic, Base	2.0L L4 - Gas
2014	Mercedes-Benz	CLA45 AMG	4Matic	2.0L L4 - Gas